

# Clamshell Mount

Cabinets  
Controllers  
**Signals**  
Signs  
Software  
Specialty



Shown Mounted on 16" Pedestrian Housing in Federal Yellow

## Overview

McCain's Clamshell Mount is a quick and convenient way to mount a 16-inch pedestrian housing. Installed half on the pole and half on the housing, the dual-mount pieces easily slide together creating a singular, secure mount. When the pedestrian housing requires maintenance or needs to be replaced, the mount easily separates, allowing the housing to be quickly taken down and remounted in the field.

## Benefits

- Multiple mounting options to accommodate your specific requirements
- Quick and easy to install
- Can be left or right mounted or easily converted one to the other
- Vandal-resistant
- Available in multiple colors

## Product Description

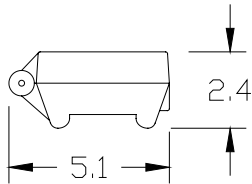
The McCain Clamshell Mount is a two-piece 16-inch pedestrian housing mount. Its unique design allows multiple mounting methods to poles four inches in diameter and larger, including through-bolt, banding, and lag screw. When using through-bolts, horizontally elongated bolt holes allow the mount to be rotated on the pole for ideal positioning.

The signal half of the Clamshell Mount is bolted directly onto the pedestrian housing and is secured to the pole-mount piece with stainless steel hinge pins. McCain's pedestrian housing can be ordered pre-drilled to readily accept the clamshell bolts making installation a snap!

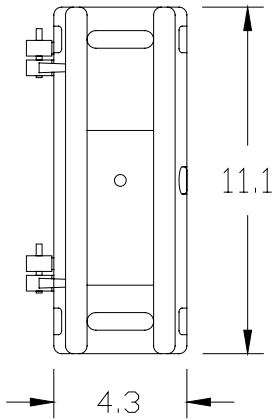
Completing the installation, the two halves are secured to each other via a vandal-resistant flathead socket bolt. The mount is made from cast aluminum alloy for strength and longevity and is available in a variety of colors to appear as though a continuation of the pedestrian housing.

# Clamshell Mount

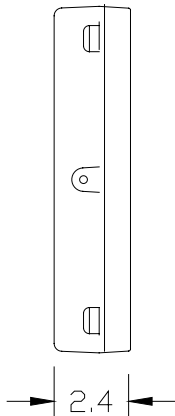
Top



Front



Side



*Dimensions rounded to the nearest 0.1"*

## Standard Features

- 2-part mounting assembly
- Symmetrical mounting holes allow for left or right mount
- Neoprene gasket provides a weathertight seal
- 3-position, 2-row terminal block mounted in the upper half of the signal mounted portion; one side with fast-on terminals, the other side with screw terminals
- 28" wire leads (3) provided to wire clamshell terminal block to pedestrian signal terminal block
- Field wiring is terminated on clamshell terminal block
- Flathead 3/16" hex socket closure bolt

## General Specifications

Dimensions: 11.1" H x 5.1" W x 2.4" D

Material: Cast aluminum alloy

Finish(es): Powder coated

Color(s): Federal yellow, signal green, black or custom colors

Latching System: Flathead 3/16" hex socket bolt

Mounting: Band, through-bolt, or lag screw

Shipping Weight: 4.5 lbs

## Options

- Conduit entrance for wood pole mount
- Pedestrian housings can be ordered pre-drilled for easy clamshell attachment

Interior view



To learn more about  
McCain's Integrated Traffic  
Solutions, please contact  
[info@mccain-inc.com](mailto:info@mccain-inc.com) or  
call (760) 727-8100



2365 OAK RIDGE WAY // VISTA, CALIFORNIA 92081 // USA // [WWW.MCCAIN-INC.COM](http://WWW.MCCAIN-INC.COM)

© 2009 McCain Inc. Updated 02/12/09. McCain reserves the right to change product specifications without notice.  
For the most up-to-date information, please contact McCain.